



INSTALLATION INSTRUCTIONS



CHEVROLET 1500 6.2L OVERLAND | PART NO. 19703

BILL OF MATERIALS:

1. INLET NDT ASSY
2. 3.50 EXT PIPE
3. MUFFLER ASSY
4. VALVE ASSY
5. X OVER AXLE ASSY
6. 2.50 EXT PIPE
7. D/S TAILPIPE EXTN
8. P/S TAILPIPE EXTN
9. D/S TAILPIPE AT4X
10. P/S TAILPIPE AT4X
11. D/S TAILPIPE ZR2
12. P/S TAILPIPE ZR2

SHOP SUPPLIES:



WEAR SAFETY GLASSES



READ INSTRUCTIONS THOROUGHLY BEFORE INSTALLING PRODUCT



SPRAY LUBRICANT

To ease removal of existing exhaust components (especially on older vehicles) spray penetrating lubricant on all fasteners and hangers/insulators that will be loosened or removed and let soak before disassembly.

HARDWARE KIT:

- 1.[2] 3.50" Torca Clamp
- 2.[5] 2.50" Torca Clamp
- 3.[3] 2.50" V-Band Clamp

MINIMUM REQUIRED TOOLS:



15 mm



Hanger Tool (Or Pry Bar)

MAGNAFLOW RECOMMENDS PROFESSIONAL INSTALLATION ON ALL THEIR PRODUCTS

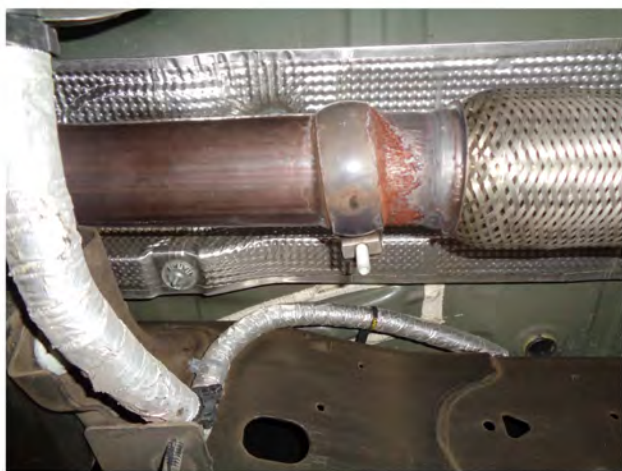


WARNING: When working on, under, or around any vehicle exercise caution. Please allow the vehicle's exhaust system to cool before removal, as exhaust system temperatures may cause severe burns. If working without a lift always consult vehicle manual for correct lifting specifications. Always wear safety glasses and ensure a safe work area. Serious injury or death could occur if safety measures are not followed.

ATTENTION: Always install any supplied band or U-bolt clamps to the proper torque specifications of 40-45 ft-lb for band clamps and 30-35 ft-lb for U-bolt clamps. Over tightening will result in the clamps breaking and will NOT be warranted by MagnaFlow.

MAGNAFLOW: 1901 Corporate Centre Dr - Oceanside, CA 92056 | 1(800)990-0905
Technical Support: 1(800) 959-9226 | Email: moreinfo@magnaflow.com

INSTALLATION INSTRUCTIONS



Step 1. To remove the OEM system first unplug the electrical connector at the exhaust valve. Next, you will need to cut between the muffler and the Y junction where it goes over the axle. You can then disengage the welded hangers from the rubber insulators and remove the tailpipe assy. Unfasten the clamp attaching the OEM inlet pipe assembly to the catalytic converter. Do not damage or discard the inlet pipe clamp or rubber insulators as they will be re-used to mount the new system. Disengage the inlet pipe assembly hanger and remove the exhaust from the vehicle. Once the OE exhaust is on the ground remove the valve motor from the OE valve and attach it to the MagnaFlow supplied valve using the OE hardware.



Step 2. To begin, attach the OE valve motor to the new valve assembly using the existing hardware. Next, fasten the Inlet pipe assembly to the outlet of the OE system using the OE clamp assembly and by fitting the welded hanger into the rubber insulator (Leave all clamps and fasteners loose for final adjustment of the complete system.)



Step 3. Only the Crew Cab Long Bed configuration will require the supplied 12.5 Extension Pipe, Install this to Inlet Pipe Assembly if required using the supplied 3.50" clamp then attach the Muffler Assembly to the Extension Pipe. If the 12.5" Extension Pipe isn't used attach the Muffler Assembly directly to the Inlet Assembly with a supplied 3.50" clamp.

INSTALLATION INSTRUCTIONS



Step 4. Next loosely attach the Y-Pipe and Valve Assemblies to the Muffler Assembly using the supplied V-Band clamps. Engage the welded hangers to the rubber insulators. Re-attach the valve connection plug.



Step 5. Next loosely attach both Tailpipe extension pipes to the outlet of the X Pipe Assembly with the supplied clamps. The two bend pipe is for the drivers side.



Step 6. Choose the Tailpipe assemblies appropriate for your vehicle. If your vehicle has tip trims, use the straight cut outlet that will fit into the OEM tip trim as shown.



Step 7. The ZR2 will use the slash cut option, as shown.

INSTALLATION INSTRUCTIONS



Step 8. Once a final position has been chosen for the new exhaust system, evenly tighten all clamps from front to rear using the torque specifications on page one of the instructions. Inspect all fasteners after 25-50 miles of operation and re-tighten if necessary.