



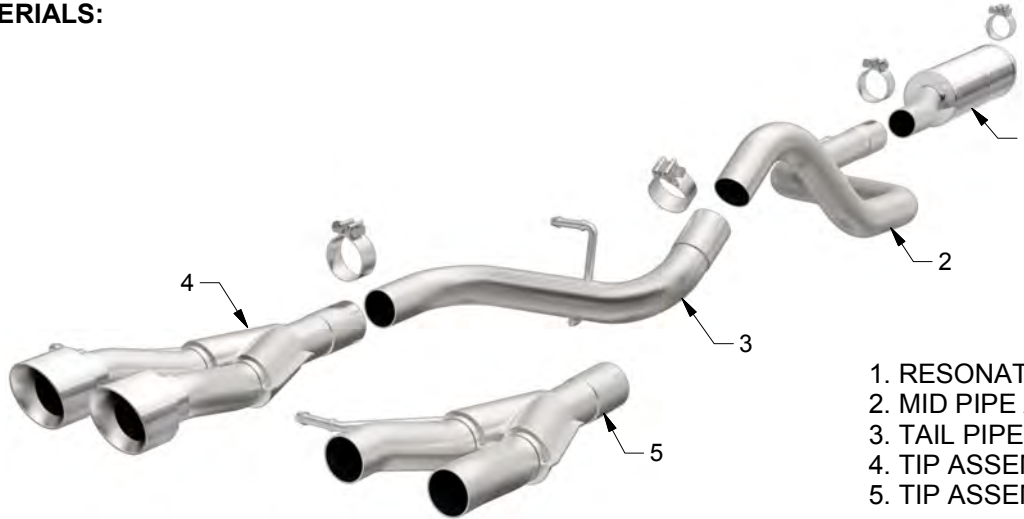
INSTALLATION INSTRUCTIONS



2013 HYUNDAI VELOSTER 1.6L

PART NO. 19325

BILL OF MATERIALS:



1. RESONATOR ASSEMBLY
2. MID PIPE ASSEMBLY
3. TAIL PIPE ASSEMBLY
4. TIP ASSEMBLY
5. TIP ASSEMBLY (OE TIP)



WEAR SAFETY GLASSES



READ INSTRUCTIONS THOROUGHLY BEFORE INSTALLING PRODUCT

SHOP SUPPLIES:



SPRAY LUBRICANT

To ease removal of existing exhaust components (especially on older vehicles) spray penetrating lubricant on all fasteners and hangers/insulators that will be loosened or removed and let soak before disassembly.

HARDWARE KIT:

- 1.[3] 2.50" Clamp
- 1.[1] 2.36" Clamp

MINIMUM REQUIRED TOOLS:



15mm
10mm



Hanger Tool
(Or Pry Bar)



Saw or other cutting tool



Phillips

MAGNAFLOW RECOMMENDS PROFESSIONAL INSTALLATION ON ALL THEIR PRODUCTS



WARNING: When working on, under, or around any vehicle exercise caution. Please allow the vehicle's exhaust system to cool before removal, as exhaust system temperatures may cause severe burns. If working without a lift always consult vehicle manual for correct lifting specifications. Always wear safety glasses and ensure a safe work area. Serious injury or death could occur if safety measures are not followed.

ATTENTION: Always install any supplied band or U-bolt clamps to the proper torque specifications of 40-45 ft-lbs for band clamps and 30-35 ft-lbs for U-bolt clamps. Over tightening will result in the clamp breaking and will NOT be warranted by MagnaFlow.

MAGNAFLOW: 22961 Arroyo Vista - Rancho Santa Margarita, CA 92688 | 1(800) 990-0905
Technical Support: 1(800) 959-9226 | Email: moreinfo@magnaflow.com

INSTALLATION INSTRUCTIONS



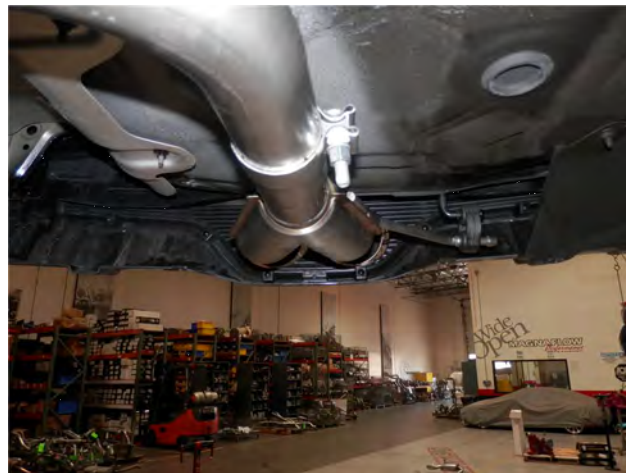
Step 1. To remove the OEM exhaust you will need to cut the exhaust pipe 3.00" rearward of the catalytic converter as shown. Deburr the cut edges. Unbolt the flange junction between the OE mid pipe and muffler assembly. Disengage all welded hangers from the rubber insulators. Retain rubber insulators as they will be needed to install your new MAGNAFLOW system. The OEM system can now be removed.



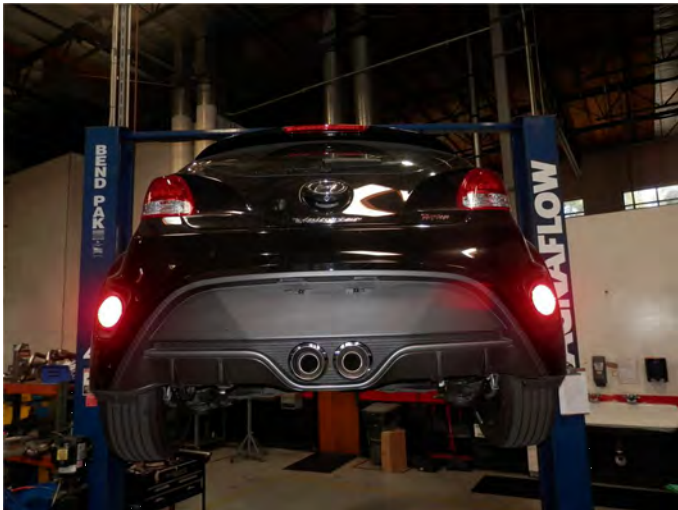
Step 2. Begin installation of your new MAGNAFLOW system by slipping the Resonator Assembly inlet end over the Catalytic Converter outlet. Loosely secure using the supplied 2.36" clamp. Leave all clamps loose during initial installation.



Step 3. Next, install the Mid Pipe Assembly, the Tail Pipe Assembly using the supplied 2.50" clamps. Locate the welded hangers to the rubber insulators.



Step 4. The MAGNAFLOW System comes with two tip options. To retain the OEM tips locate the Tail Pipe Assembly (OE Tip) to the OEM tips. Loosely secure using the supplied 2.50" clamp. For the MAGNAFLOW tip option remove the OEM tips with the Phillips head screwdriver and 10mm socket. Now the Tail Pipe Assembly can be loosely installed using the supplied clamp locating the welded hanger to the rubber insulator.



Step 5. Once a final position has been chosen for the new exhaust system, evenly tighten all clamps from front to rear using the torque specifications on page one of the instructions. Inspect all fasteners after 25-50 miles of operation and re-tighten if necessary.