

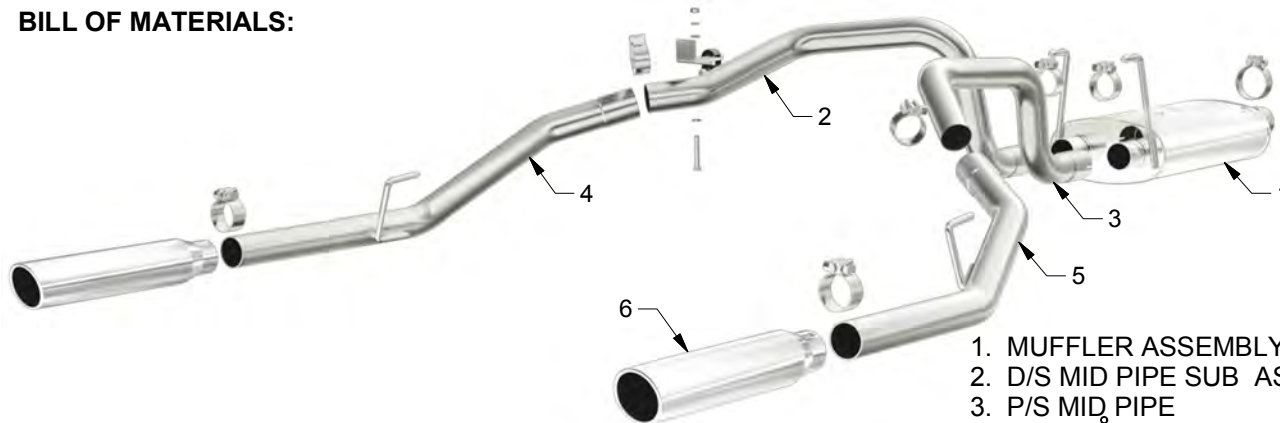


INSTALLATION INSTRUCTIONS



'09-'13 Dodge Ram 1500 3.6L Duals | PART NO. 15249

BILL OF MATERIALS:



1. MUFFLER ASSEMBLY
2. D/S MID PIPE SUB ASSEMBLY
3. P/S MID PIPE
4. D/S TAIL PIPE ASSEMBLY
5. P/S TAIL PIPE ASSEMBLY
6. [2] 3.50" POLISHED TIPS



WEAR SAFETY GLASSES



READ INSTRUCTIONS THOROUGHLY BEFORE INSTALLING PRODUCT

SHOP SUPPLIES:



SPRAY LUBRICANT

To ease removal of existing exhaust components (especially on older vehicles) spray penetrating lubricant on all fasteners and hangers/insulators that will be loosened or removed and let soak before disassembly.

HARDWARE KIT:

1. [1] 3.00" Clamp
2. [6] 2.50" Clamps
3. [2] Hanger Insulator Rubbers
4. [1] Hanger Bracket Assembly
5. [2] 3/8" Flat Washers
6. [1] 3/8" Split Lock Washer
7. [1] 3/8" Nut
8. [1] 3/8" x 2.75" Bolt

MINIMUM REQUIRED TOOLS:



Pry Bar



15mm Socket

MAGNAFLOW RECOMMENDS PROFESSIONAL INSTALLATION ON ALL THEIR PRODUCTS



WARNING: When working on, under, or around any vehicle exercise caution. Please allow the vehicle's exhaust system to cool before removal, as exhaust system temperatures may cause severe burns. If working without a lift always consult vehicle manual for correct lifting specifications. Always wear safety glasses and ensure a safe work area. Serious injury or death could occur if safety measures are not followed.

ATTENTION: Always install any supplied band or U-bolt clamps to the proper torque specifications of 40-45 ft-lbs for band clamps and 30-35 ft-lbs for U-bolt clamps. Over tightening will result in the clamp breaking and will NOT be warranted by MagnaFlow.

MAGNAFLOW: 22961 Arroyo Vista - Rancho Santa Margarita, CA 92688 | 1(800) 990-0905
Technical Support: 1(800) 959-9226 | Email: moreinfo@magnaflow.com

INSTALLATION INSTRUCTIONS



Step 1. Begin removing the OEM exhaust by unbolting the clamp attaching the tail pipe assembly. Disengage the welded hangers from the OEM rubber Insulators using a pry bar or similar tool. Remove the assembly.



Step 2. Next unbolt the OEM clamp attaching the inlet muffler assembly to the outlet pipe of the flange coupling. Remove the welded hangers from the rubber insulators using a pry bar. Do not discard or damage the insulators as they will be needed to install your new system. There is a grounding strap that needs to be unclipped. The OEM system may now be removed.



Step 3. You are now ready to install your new MAGNAFLOW system. Loosely attach the the Muffler Assembly to the OEM pipe outlet using the supplied 3.00" clamp. Be sure to line up the large notch in the pipe with the alignment peg. Engage the welded hanger to the OEM rubber insulator. Leave all clamps and hardware loose for final adjustment of the complete system.



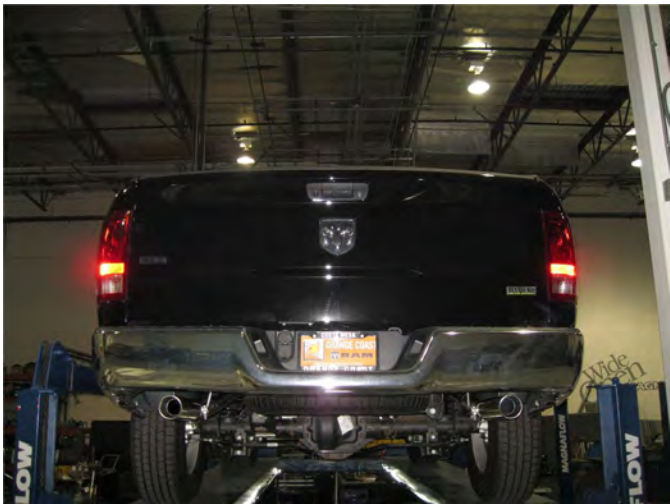
Step 4. Install the supplied hanger assembly using a pre drilled hole in the drivers side sub frame and the supplied hardware. This will be used with the supplied rubber insulator to locate the new drivers side Mid Pipe Assembly hanger. Slip the inlet of both Mid Pipes over the outlet of the Muffler Assembly and loosely secure using the supplied 2.50" clamp and 15mm socket. Engage all welded hangers to the OEM rubber insulators.



Step 5. Install both Tail Pipe Assemblies in a similar fashion. Use the supplied rubber Insulator to locate the drivers side welded hanger.



Step 6. Loosely attach the polished tips using the supplied 2.50" clamps to the desired position.



Step 7. Once a final position has been chosen for the new system, evenly tighten all fasteners from front to rear using the torque specifications on page one of this document. Inspect all fasteners after 25-50 miles of operation and retighten if necessary.