

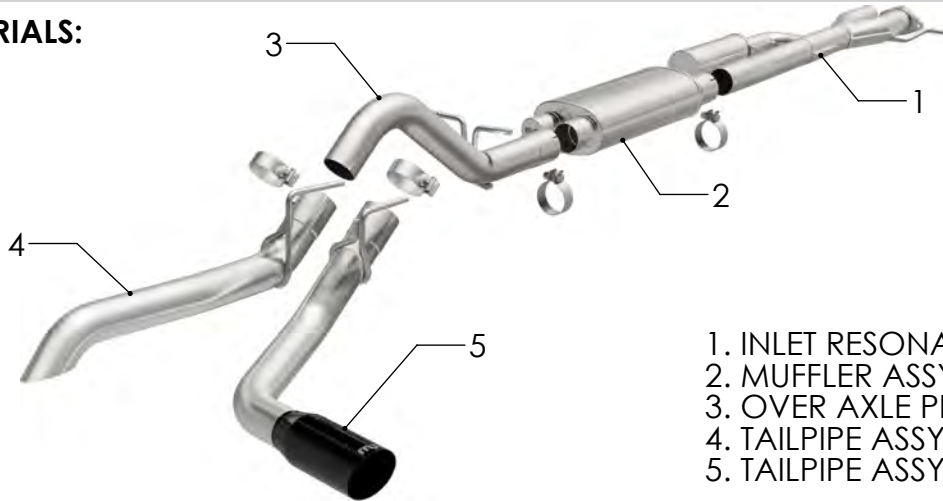


# INSTALLATION INSTRUCTIONS



FORD RANGER OVERLAND 2.7L PART NO. 19663

## BILL OF MATERIALS:



- 1. INLET RESONATOR ASSY
- 2. MUFFLER ASSY
- 3. OVER AXLE PIPE ASSY
- 4. TAILPIPE ASSY (DOWNTURN)
- 5. TAILPIPE ASSY (SIDE EXIT)

## SHOP SUPPLIES:

### **HARDWARE KIT:**

- 1. [4] 3.00" Clamp



WEAR SAFETY GLASSES



READ INSTRUCTIONS THOROUGHLY BEFORE INSTALLING PRODUCT



SPRAY LUBRICANT

To ease removal of existing exhaust components (especially on older vehicles) spray penetrating lubricant on all fasteners and hangers/insulators that will be loosened or removed and let soak before disassembly.

## MINIMUM REQUIRED TOOLS:



13mm, 15 mm



Hanger Tool (Or Pry Bar)

## **MAGNAFLOW RECOMMENDS PROFESSIONAL INSTALLATION ON ALL THEIR PRODUCTS**

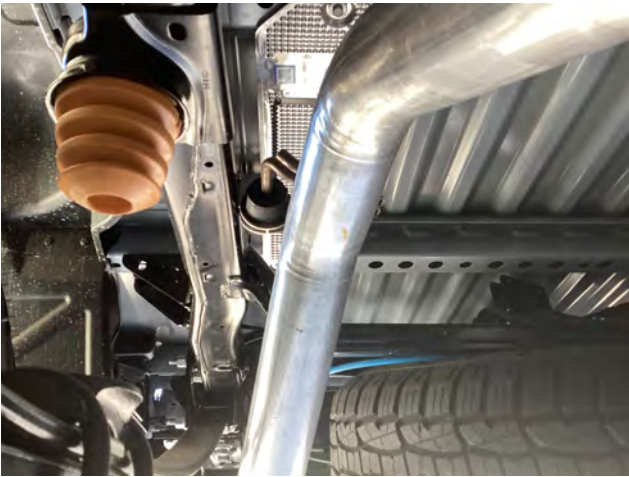


**WARNING:** When working on, under, or around any vehicle exercise caution. Please allow the vehicle's exhaust system to cool before removal, as exhaust system temperatures may cause severe burns. If working without a lift always consult vehicle manual for correct lifting specifications. Always wear safety glasses and ensure a safe work area. Serious injury or death could occur if safety measures are not followed.

**ATTENTION:** Always install any supplied band or U-bolt clamps to the proper torque specifications of 40-45 ft-lb for band clamps and 30-35 ft-lb for U-bolt clamps. Over tightening will result in the clamps breaking and will NOT be warranted by MagnaFlow.

**MAGNAFLOW:** 1901 Corporate Centre Dr - Oceanside, CA 92056 | 1(800)990-0905  
**Technical Support:** 1(800) 959-9226 | Email: [moreinfo@magnaflow.com](mailto:moreinfo@magnaflow.com)

## INSTALLATION INSTRUCTIONS



**Step 1.** To remove the OEM exhaust system disengage the welded hangers from the rubber insulators and remove the rear Muffler/Tailpipe Assy then detach the clamp and fasteners attaching the OEM inlet pipe assembly to the flex pipes. Do not damage or discard the OE clamp, fasteners the rubber insulators as they will be re-used to mount the new system. Remove the exhaust from the vehicle.



**Step 2.** To begin installing your new MagnaFlow exhaust system, loosely fasten the Inlet Resonator Assembly to the outlet of the flex pipes using the OE clamp and fasteners. Engage the welded hanger into the rubber insulator (Leave all clamps and fasteners loose for final adjustment of the complete system.)



**Step 3.** Next loosely attach the Muffler Assembly to the Inlet Resonator Assembly using the supplied clamp.

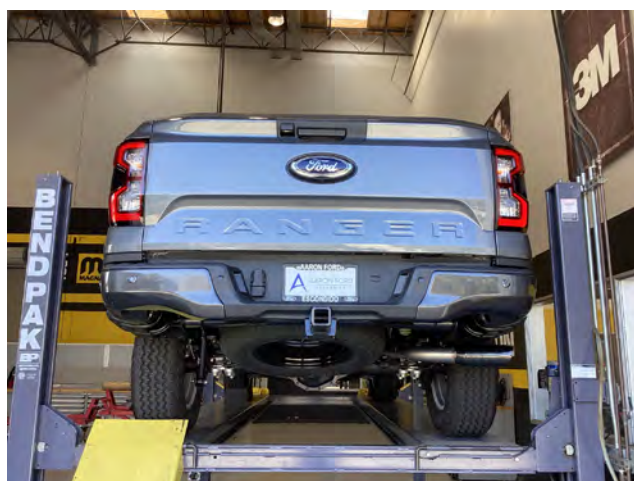
## INSTALLATION INSTRUCTIONS



**Step 4.** Next, loosely install the Over-Axle Pipe using the supplied 3.00" clamp. Locate welded hangers to the rubber insulators.



**Step 5.** Next attach the Tailpipe Assembly (either the Side Exit or Turn Down) to the Over Axle Pipe Assembly with the supplied 3.00" clamp and fit the hanger into the rubber insulator.



**Step 6.** Once a final position has been chosen for the new exhaust system, evenly tighten all clamps from front to rear using the torque specifications on page one of these instructions. Inspect all fasteners after 25-50 miles for operation and re-tighten if necessary