

## #PIP5232C: Premature Catalytic Converter Failures - (Mar 4, 2016)

Subject: Premature Catalytic Converter Failures

Models: 2016 and Prior GM Cars and Gasoline-Powered MST Light Duty and HD Trucks



---

This PI was superseded to update Recommendation/Instructions. Please discard PIP5232B.

---

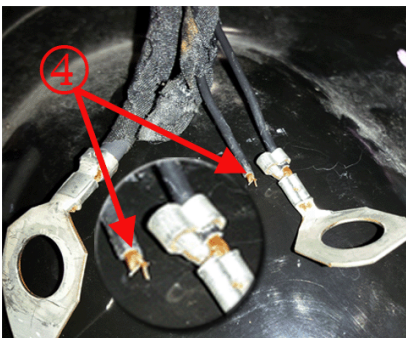
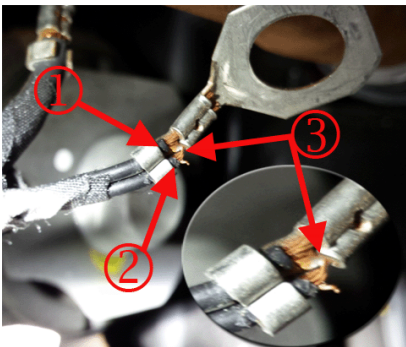
The following diagnosis might be helpful if the vehicle exhibits the symptom(s) described in this PI.

### Condition/Concern

Technicians may encounter a concern where the catalytic converter has come apart or has set a P0420 and/or P0430.

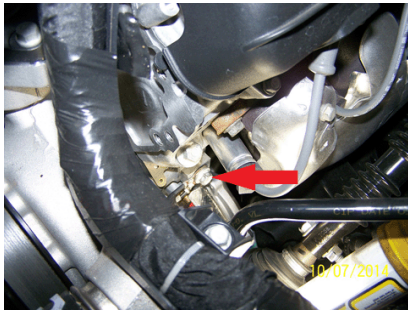
### Recommendation/Instructions

If you believe the catalytic converter has failed with no apparent reason, it is recommended to inspect for a poor crimp for the coil grounds terminal on the engine block for the bank with the concern.



Technicians should inspect the ground for possible corrosion or damage at ground terminal ring, fasteners and grounding surfaces.

If no corrosion or damage is found, tighten the ground bolt to the proper torque



**Warranty Information**

For wiring repairs covered under warranty, please refer to latest version of bulletin 10-00-89-005 for warranty information on wire/connector repairs.

Please follow this diagnostic or repair process thoroughly and complete each step. If the condition exhibited is resolved without completing every step, the remaining steps do not need to be performed.

GM bulletins are intended for use by professional technicians, NOT a "do-it-yourselfer". They are written to inform these technicians of conditions that may occur on some vehicles, or to provide information that could assist in the proper service of a vehicle. Properly trained technicians have the equipment, tools, safety instructions, and know-how to do a job properly and safely. If a condition is described, DO NOT assume that the bulletin applies to your vehicle, or that your vehicle will have that condition. See your GM dealer for information on whether your vehicle may benefit from the information.



WE SUPPORT VOLUNTARY  
TECHNICIAN  
CERTIFICATION