

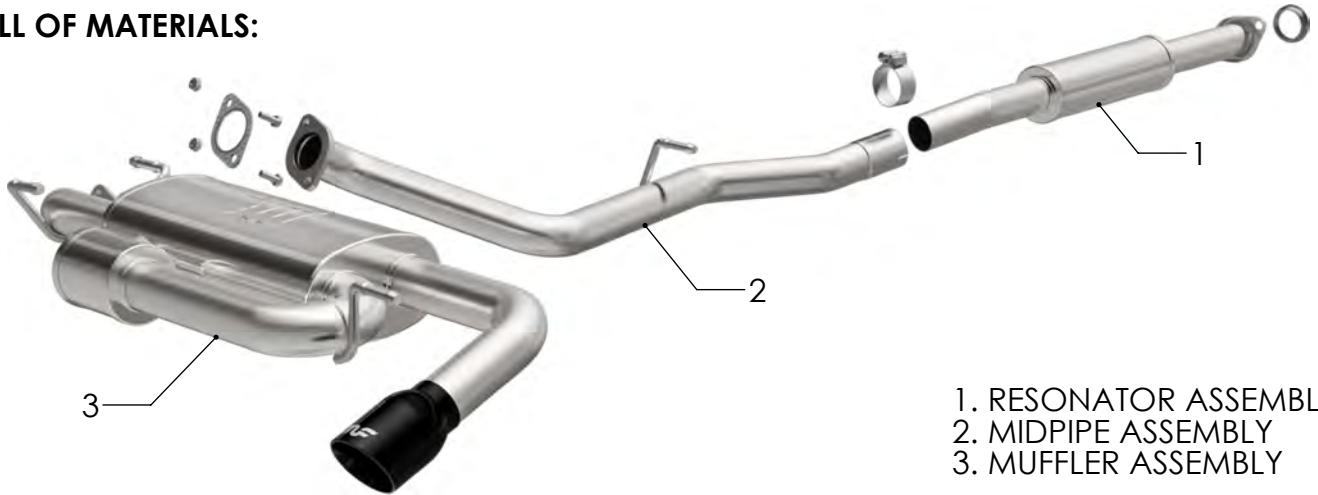


INSTALLATION INSTRUCTIONS



SUBARU CROSSTREK OVERLAND | PART NO. 19676

BILL OF MATERIALS:



- 1. RESONATOR ASSEMBLY
- 2. MIDPIPE ASSEMBLY
- 3. MUFFLER ASSEMBLY



WEAR SAFETY GLASSES



READ INSTRUCTIONS THOROUGHLY BEFORE INSTALLING PRODUCT



SPRAY LUBRICANT

To ease removal of existing exhaust components (especially on older vehicles) spray penetrating lubricant on all fasteners and hangers/insulators that will be loosened or removed and let soak before disassembly.

HARDWARE KIT:

- 1. [1] 2.50" CLAMP
- 2. [2] GASKET

MINIMUM REQUIRED TOOLS:



15,17 mm



Hanger Tool (Or Pry Bar)

MAGNAFLOW RECOMMENDS PROFESSIONAL INSTALLATION ON ALL THEIR PRODUCTS



WARNING: When working on, under, or around any vehicle exercise caution. Please allow the vehicle's exhaust system to cool before removal, as exhaust system temperatures may cause severe burns. If working without a lift always consult vehicle manual for correct lifting specifications. Always wear safety glasses and ensure a safe work area. Serious injury or death could occur if safety measures are not followed.

ATTENTION: Always install any supplied band or U-bolt clamps to the proper torque specifications of 40-45 ft-lb for band clamps and 30-35 ft-lb for U-bolt clamps. Over tightening will result in the clamps breaking and will NOT be warranted by MagnaFlow.

MAGNAFLOW: 1901 Corporate Centre Dr - Oceanside, CA 92056 | 1(800)990-0905

Technical Support: 1(800) 959-9226 | Email: moreinfo@magnaflow.com

INSTALLATION INSTRUCTIONS



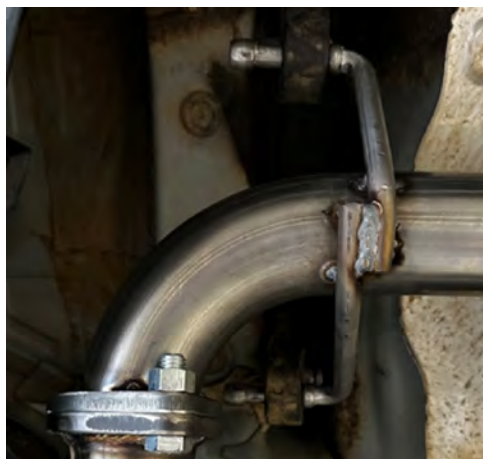
Step 1. Begin removal of your OEM exhaust system by unbolting the flange behind the catalytic converter and the flange connecting the Midpipe to the Muffler Assembly. Remove welded hanger from the rubber insulators. Midpipe can now be removed.



Step 2. Disconnect the rubber insulators that suspend the Muffler Assembly (see above). The muffler can now be removed.



Step 3. Before installation of the combined center pipe, slide the Resonator Assembly into the Midpipe with the included 2.50" clamp loosely installed. Insert the hanger into the rubber insulator. Ensure the bolt holes of the flange line up to the manifold flange.



Step 4. Install the MagnaFlow muffler assembly into the empty space near the rear bumper. For easiest installation, begin with the rear driver's side insulator.

MAGNAFLOW: 1901 Corporate Centre Dr - Oceanside, CA 92056 | 1(800)990-0905
Technical Support: 1(800) 959-9226 | Email: moreinfo@magnaflow.com

REV 000 7/22/2024

X INSTALLATION INSTRUCTIONS



Step 5. Install flat gasket between Muffler and Midpipe, and insert bolts. This will position the slip fit between the Resonator and Midpipe correctly.



Step 6. Once proper positioning has been attained for the new exhaust system, tighten the clamp and mounting bolts using the torque specification on page one of these instructions. Inspect all fasteners after 25-50 miles of operation. Re-tighten if necessary.